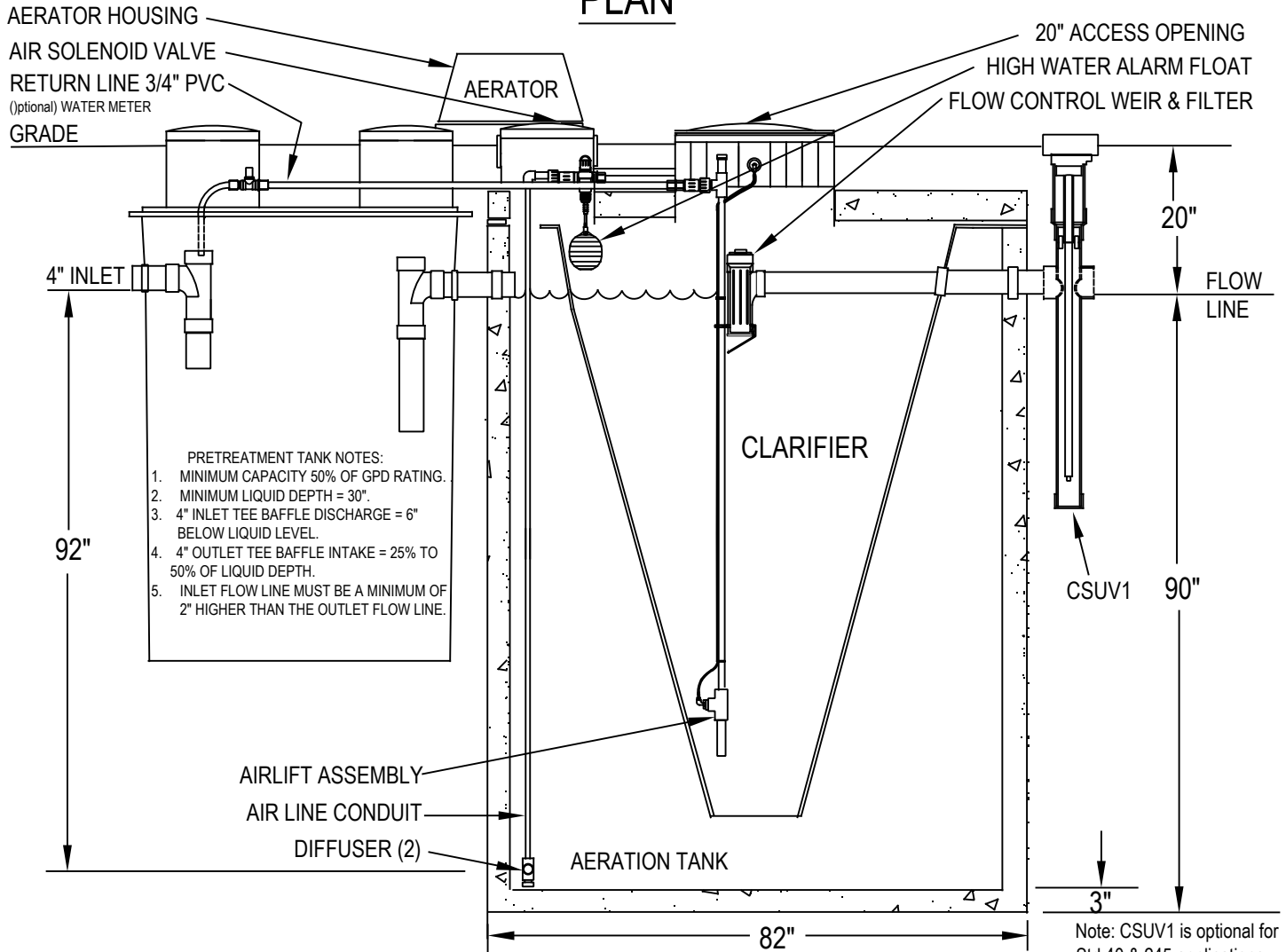


**PLAN**



**SECTION**

Note: CSUV1 is optional for Std 40 & 245 applications. Required for Std 350 applications.

PROPRIETARY AND CONFIDENTIAL

THIS INFORMATION CONTAINED IN THE DRAWING IS THE SOLE PROPERTY OF CLEARSTREAM. ANY REPRODUCTION IN PART OR AS A WHOLE WITHOUT THE WRITTEN PERMISSION OF CLEARSTREAM IS PROHIBITED.

DRAWN BY RC	DATE 03/16/2020
CHECKED BY	DATE 9/3/2021
SCALE: NTS	SHEET 1 OF 1

	1000DAC
DWG. NO.	1000DAC w/pre

**CLEARSTREAM**<sup>®</sup>  
WASTEWATER SYSTEMS, INC.  
RESIDENTIAL • COMMERCIAL • MARINE

P.O. Box 7568 Beaumont, Texas 77726